

Public Safety Institute Report



JANUARY 30, 2008

Public Safety Institute

The 2007 training year was another good year for the Public Safety Institute. Training hours continue to increase despite the state budget issues in the fourth quarter of training.

The Public Safety Institute is centrally located in the Upper Peninsula of Michigan on the Campus of Northern Michigan University. The Institute has four major functions; provide in-service training for the police officers of the Upper Peninsula, operate the NMU Regional Police Academy, provide corrections training for the local corrections officers of the Upper Peninsula, and conduct the MCOLES Reading/Writing Exam and the Physical Fitness Exam, each of these functions expanded during the 2007 training year.

The Public Safety Institute is staffed by one full-time Training Director, a full-time Coordinator of In-Service Training/Regional Police Academy and a Department Secretary who share responsibilities. The Institute also employs approximately 80 contract instructors from various specialty areas.

FUNCTIONS

The primary function of the Public Safety Institute, located on the campus of Northern Michigan University, is to provide in-service law enforcement training for the law enforcement officers of the Upper Peninsula. Law Enforcement agencies including the Michigan State Police, Michigan Department of Natural Resources, United States Forest Service, Sheriff Departments and local police departments, look to the Public Safety Institute to evaluate, schedule and present in-service training for their personnel.

Participants in these training programs have included all ranks from patrol officers to chief administrators (Chiefs, Directors, Sheriffs and Post Commanders). The programs are directed at Act 302 Eligible officers. However, if space is available, non-eligible officers are permitted to attend. The goal is to provide training to all levels of the law enforcement community in the Upper Peninsula. The trainees in our training programs range from Patrol Officers to Chiefs and Sheriffs.

The geographical area served by the Public Safety Institute extends from Ironwood and Gogebic County on the west to Sault Ste Marie and Chippewa County on the east. On the southern end of the service area are Menominee City and County and to the North is Keweenaw County. The area is served by numerous small law enforcement agencies (the smallest are one officer departments to the largest department which has 37 officers with the exception of the Michigan State Police). The limited size of these departments precludes them from having specialized units for traffic/alcohol enforcement, evidence collection, major crimes investigation and other specialty areas. These departments assist each other when the need arises. The distances between the eastern and western most

agencies are 308 miles. From the Public Safety Institute to Ironwood is 146 miles, to Sault Ste. Marie is 162 miles, to Menominee is 119 miles.

The service area is bordered by Canada on the east, Lake Superior on the north, Wisconsin on the west and the southwest and Lake Michigan on the south. The main east/west two lane highways provide major travel routes to and from Canada, Wisconsin, and Minnesota. This, when coupled with a high year round tourism rate, lead to higher incidences of crime.

The Public Safety Institute currently has 33 member agencies, with an officer membership of approximately 550 officers. The number of agencies slightly fluctuates year to year depending on the courses offered. At the beginning of the year, each department is sent a schedule for the year which includes the member rate and non-member rate for the courses offered. This allows the department to determine if it is cost effective for the department to join the consortium based on their training needs for that particular year. They are also sent a Memorandum of Understanding where upon they agree to pay the member rate and the consortium agrees to provide the training. Member agencies pay \$150.00 per certified officer and \$75.00 per part-time officer per year. The Michigan State Police and Michigan Department of Natural Resources do not pay this fee. In lieu of payment, they provide instructors for various programs at no cost to the consortium. These funds are specifically used to supplement the administrative category to pay for the salary and fringe benefits to manage the grants, room rentals, audio-visual equipment rentals exceeding the grant allotment, and any other expenses not allowed in the grant. These funds are also used to offer courses that do not meet the new grant guidelines, i.e. Basic Radar. A daily rate is set for each program to also cover expenses not covered in the grant. This rate is set for \$8.00 per day for members and \$58.00 per day for non-members. This fee is used to purchase coffee, rolls, pop and various other items not covered in the grant.

Much of the training is specialized and therefore not cost effective for small agencies to provide for themselves. It is more effective to provide a trainer in proximity to pockets of departments in the Upper Peninsula than it is to send an officer to one central location or the Lower Peninsula for certain classes. In addition, these small agencies cannot afford to release officers for extended periods of time in order to attend training programs downstate. For an officer to attend a one-day training session downstate, it requires a minimum of three days away from the department. A one-day training session hosted by the Public Safety Institute would require just that, one day. It is more cost effective for the Public Safety Institute to bring the classes to the departments of the Upper Peninsula than it is to send officers downstate.

The Public Safety Institute coordinates its training schedule with the law enforcement agencies of the Upper Peninsula to insure that the training needs are being met. A survey is sent out and the results are used to develop the following year's training. This survey showed a common theme; more training locally. As a result of these requests, our grant application for 2007 was adjusted to meet their needs as we are offering courses at various locations throughout the Upper Peninsula. The ability to offer training locally

provides the department the opportunity to train most of their officers. This has been a positive comment in the survey process.

In 2007, the Public Safety Institute offered its Advanced Law Enforcement Training program for the fifth round. The ability to update the officer in a one week time period on the essential job functions allows the department to send entire departments. This year we offered the program six times. Four sessions in Marquette and two sessions in Sault Ste. Marie. This program consists of courses that are essential for Law Enforcement personnel. The program consists of CPR/AED, Building Searches, Defensive Tactics, Drug Identification, Ethics, Domestic Violence, Hazardous Materials, Precision Driving Update and Felony Stops. This course is offered in a four-day period with an optional Legal Update on the fifth day. We were pleased with the results with this program. The ability to offer this program in Marquette and Sault Ste. Marie has enabled the departments to send their entire staff with minimal impact on their staffing.

As stated above, the number of member agencies slightly fluctuates year to year with regard to course offerings. The ability to offer courses at various locations has spurred interest for some of the agencies to join the consortium that have not been members in the past. Currently we have member agencies throughout the entire Upper Peninsula with the exception of the southeast corner, the Straights area, which belongs to another consortium. Of the 620 or so officers in the Upper Peninsula approximately 85% of them are members of the NMU Public Safety Institute.

As you can see, the Northern Michigan University Public Safety Institute is geographically represented. This consortium concept along with the support of the MCOLES grant process enables the departments of the Upper Peninsula to receive training that would not be possible with limited local budgets.

The second function of the Public Safety Institute is to provide educational and administrative support to the other arm of the Institute, the Regional Police Academy. The Regional Police Academy is an intensive sixteen-week training program for prospective law enforcement officers. The academy's core curriculum is mandated by the Michigan Commission on Law Enforcement Standards (MCOLES), but it is expanded on almost doubling the required hours for completion. A recruit who completes the academy and passes the MCOLES certification examination is then certifiable as a law enforcement officer in Michigan.

The third major function of the Institute is to locate, evaluate and schedule training for the County correctional officers of the Upper Peninsula. This function will be expanded in 2006 to include In-Service training for Corrections officers along with offering the 160 hour Corrections Academy.

The fourth major function is the operation of a Michigan Commission on Law Enforcement Standards (MCOLES) Pre-employment testing site. This aspect of the Institute offers both the reading and writing and physical skills tests as prescribed by

MCOLES to prospective law enforcement officers of the Upper Peninsula and State of Michigan. The funding source for this aspect is the fees collected from the participants.

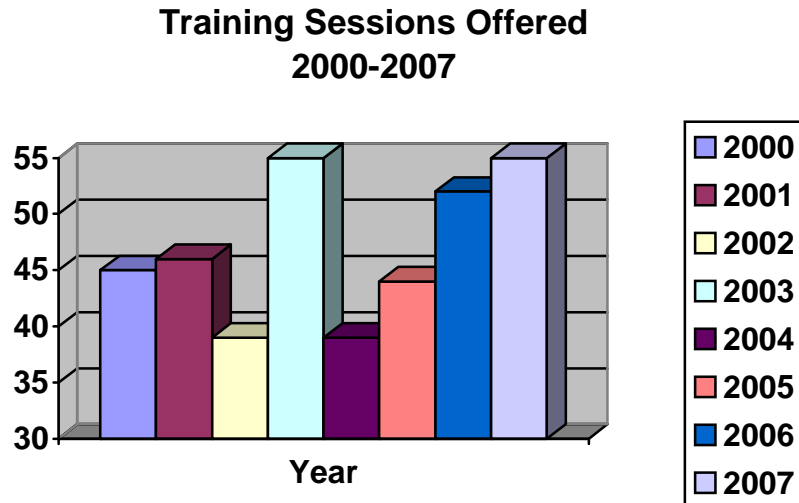
LAW ENFORCEMENT IN-SERVICE TRAINING FUNCTIONS

During 2007 the Institute offered 58 training sessions at various locations throughout the Upper Peninsula. A comparison to prior year's training session offerings is displayed in figure 1. A comparison to prior year's training hours offered is displayed in figure 2. A comparison to prior year's attendance is displayed in figure 3.

These training sessions included the following training programs:

- Basic Radar Operator Training
- Domestic Violence Training
- Legal Update Training 14 sessions
- Evidence Technician Update
- REID Child Abuse Investigation
- Evidence Technician Training
- PBT Calibration IIIA
- Standard Field Sobriety Tests
- Advanced Law Enforcement Training
- REID Interview and Interrogation School
- Advanced REID Interview and Interrogation School
- Datamaster Training
- Basic Firearms Instructor School
- Patrol Rifle/Shotgun School
- At-Scene Traffic Crash Investigation
- First Line Supervisor Training
- Laser Speed Measurement Training
- MMRMA Program
- Precision Driving Operator Training
- Principles of Policing
- Reid Street Crimes
- Advanced Evidence Technician Photography
- PPCT Recertification
- Firearms Instructor Update
- Sig Armorer School
- Colt Armorer School
- Remington Armorer School

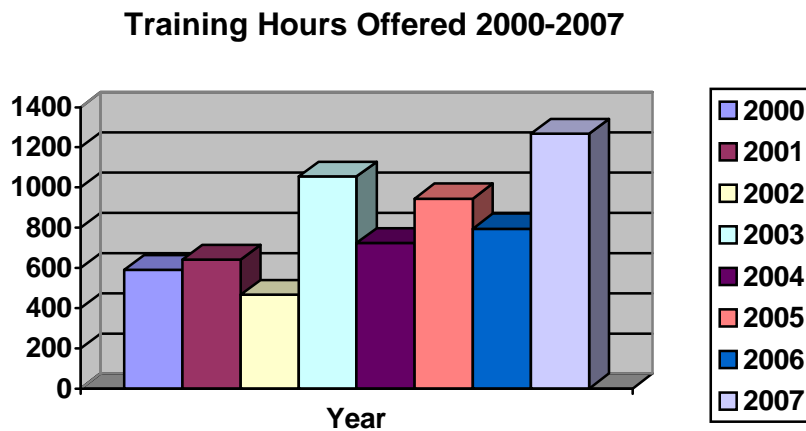
Figure 1



Number of Training Sessions Offered 2000-2007

<u>Year</u>	<u>Number</u>	<u>Year</u>	<u>Number</u>
2000	45	2004	39
2001	46	2005	44
2002	39	2006	52
2003	63	2007	58

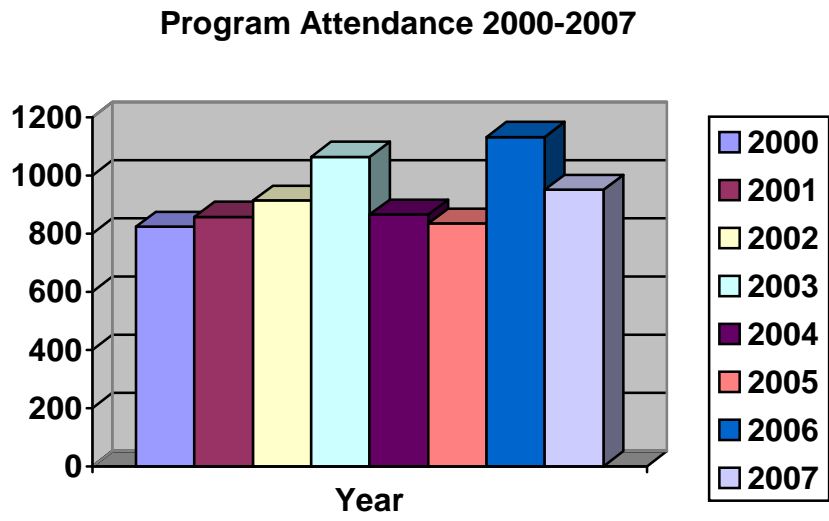
Figure 2



Number of Hours Offered 2000-2007

<u>Year</u>	<u>Number</u>	<u>Year</u>	<u>Number</u>
2000	591	2004	724
2001	641	2005	944
2002	467	2006	795
2003	1055	2007	1268

Figure 3

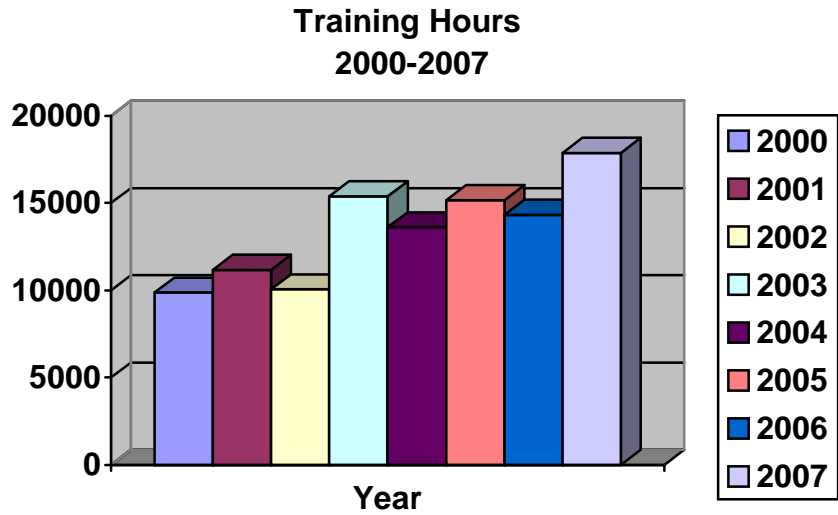


Program Attendance 2000-2007

<u>Year</u>	<u>Number</u>
2000	823
2001	857
2002	913
2003	1063
2004	865
2005	834
2006	1132
2007	950

Figure 4 depicts the amount of training hours for the year. The training hour is calculated by taking the number of students attending a program by the number of required hours for the class.

Figure 4

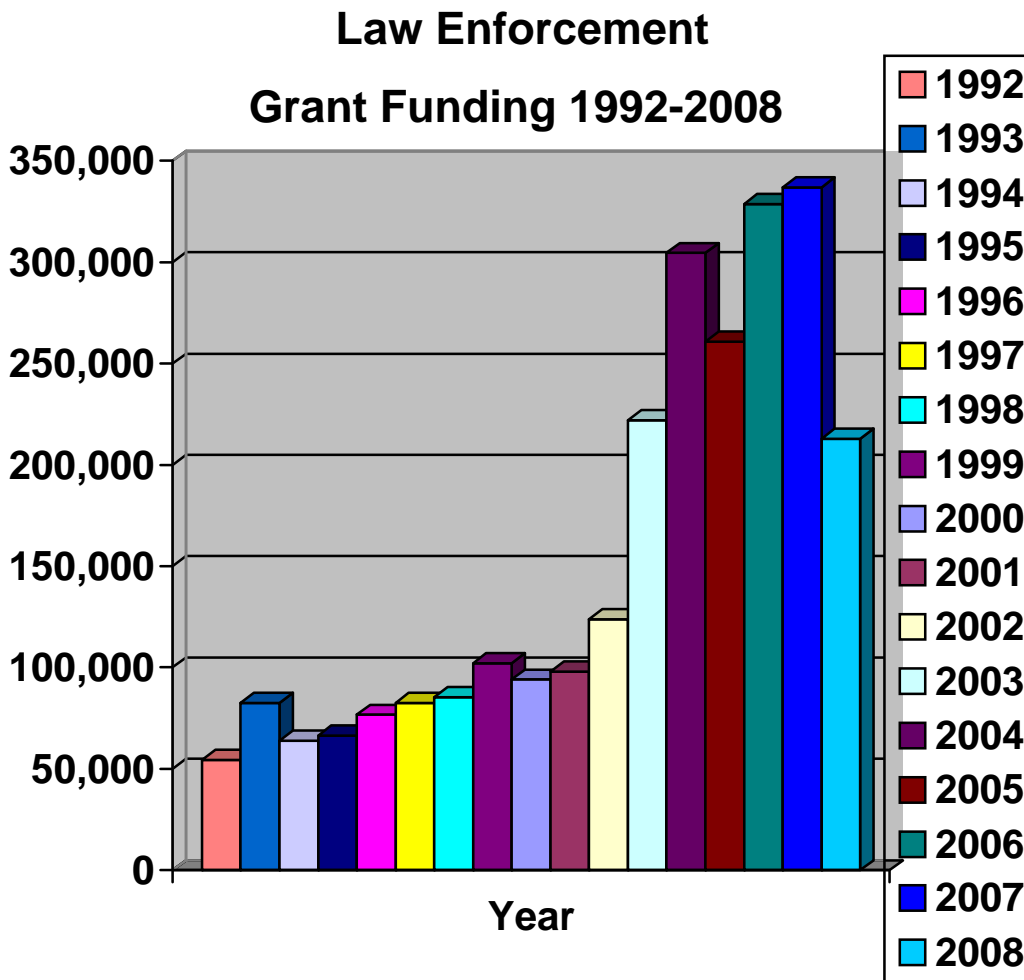


Training Hours 2000-2007

<u>Year</u>	<u>Number</u>
2000	9,876
2001	11,174
2002	10,061
2003	15,384
2004	13,616
2005	15,164
2006	14,334
2007	17,874

As in past years, funding from a Michigan Commission on Law Enforcement Standards competitive grant process is a critical component for the training offerings to be cost effective. A comparison of prior year's grant funding is displayed in figure 5.

Figure 5



Grant Funding 1992-2008

1992	\$54,423	2000	\$94,064
1993	82,530	2001	98,030
1994	63,926	2002	123,842
1995	66,380	2003	222,044
1996	76,684	2004	304,513
1997	82,472	2005	260,936
1998	85,323	2006	328,640
1999	102,048	2007	336,891
		2008	212,819

Total: \$2,595,565

One of the services provided to member departments by the Institute is the yearly training summary. This report is designed to expedite the preparation of the department's Law Enforcement (PA 302, LED) report, which must be submitted to the Michigan Commission on Law Enforcement Standards annually. This report also allows the Institute to evaluate a member's usage of training to assist in determining if that department's training needs are being met.

The yearly training summaries allow the Institute to compare per hour cost to assist in making decisions on the cost effectiveness of the training offered. Figure 6 depicts the per hour cost of training for selected members of the training consortium. These amounts are calculated by totaling the hours of training attended by members of the departments and dividing that total into the dues paid by the department.

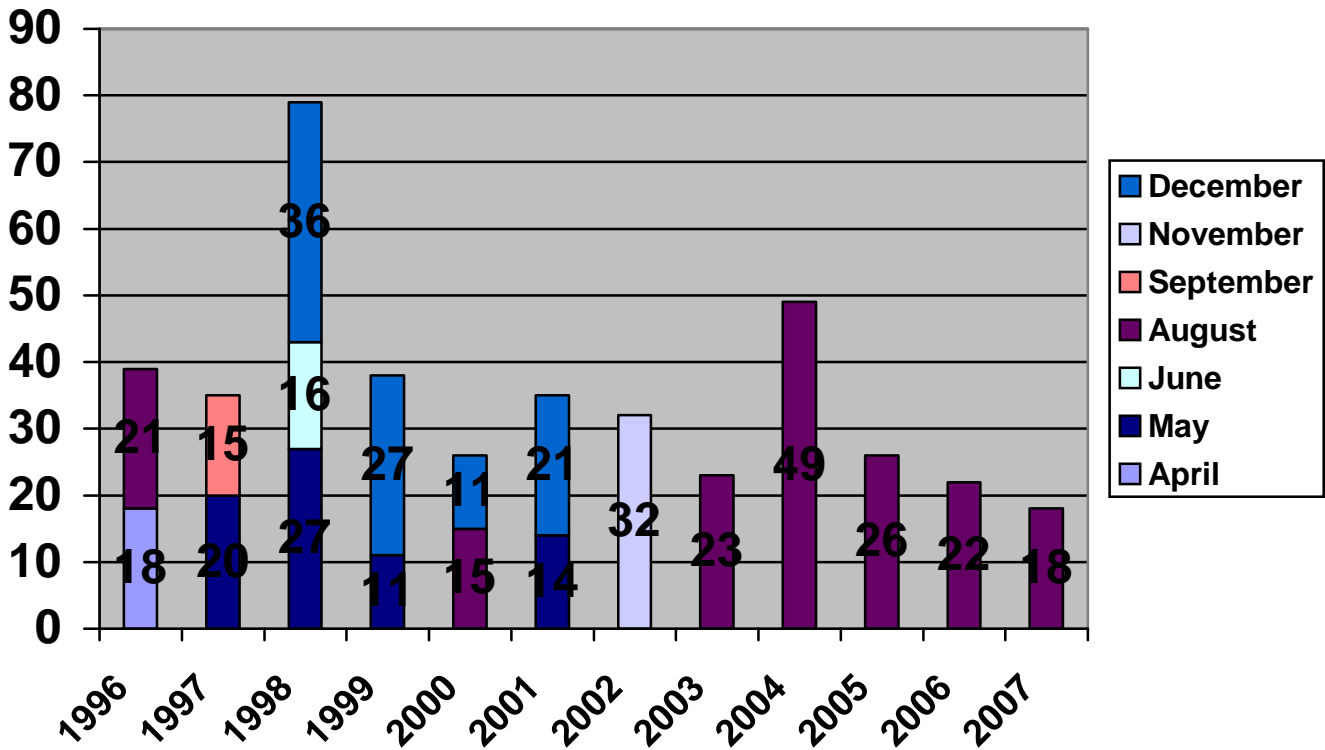
Figure 6 Dues per Hour of Training by Department
2007 Training Year

Munising PD	\$2.64
Negaunee City PD	\$2.90
Norway PD	\$2.97
Hannahville Tribal PD	\$3.03
Gladstone PS	\$3.16
NMU PS	\$3.18
Chocolay Township PD	\$3.42
Escanaba PS	\$3.57
Sault Ste. Marie PD	\$3.95
Marquette County SD	\$3.96
Stephenson PD	\$4.13
National Park Service	\$4.75
Chippewa County SD	\$5.04
Ironwood PD	\$5.08
Delta County SD	\$5.21
Luce County PD	\$5.38
Marquette City PD	\$5.68
Kinross District PD	\$5.69
Ishpeming PD	\$5.93
Menominee County SD	\$5.93
Dickinson County SD	\$6.26
Houghton PD	\$6.36
Baraga Village PD	\$7.25
Forsyth Township PD	\$7.62
Alger County SD	\$9.25
Baraga County SD	\$12.25
Ontonagon County SD	\$12.91
Manistique PS	\$13.05
Schoolcraft County SD	\$15.06
Ishpeming Township PD	\$19.75
USDA Forest Service	\$19.75
L'Anse Village PD	\$29.13
Laurium PD	\$76.00

REGIONAL POLICE ACADEMY

The Regional Police Academy function is to provide a MCOLES certified program for the Upper Peninsula. The Academy has students from all three Universities in the Upper Peninsula along with the three Community Colleges. A comparison of the number of recruits attending the Police Academy is displayed in Figure 7.

Figure 7



Year	April	May	June	August	September	November	December	Total
1996	18			21				39
1997		20			15			35
1998		27	16*				36	79
1999		11					27	38
2000				15			11	26
2001		14					21	35
2002						32		32
2003				23				23
2004				49				49
2005				26				26
2006				22				22
2007				18				18
							TOTAL	444

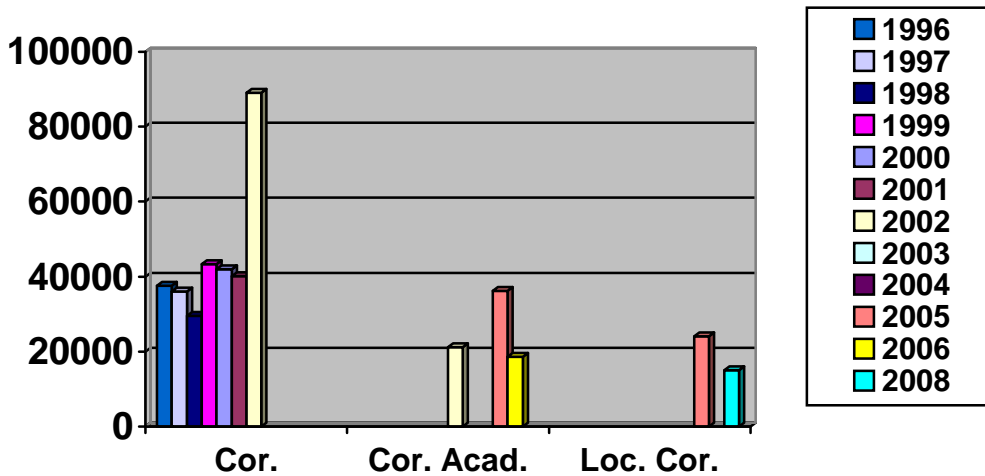
* MCOLES TRIBAL WAIVER COURSE

CORRECTIONS IN-SERVICE TRAINING FUNCTION

The Public Safety Institute reentered the Corrections training in 2005. The Institute was awarded \$89,021 in 2003 to offer Corrections training to the Michigan Department of Corrections. However, due to budget constraints, the Correctional facilities were unable to send their officers to the training. The funding was returned to the MCOLES because we were unable to meet the grant guidelines for the intended audience. We have since applied and have received funding to offer Correctional training to the local corrections officers. This includes the MCOTC certified 106 hours Corrections Academy along with Advanced Corrections training. A comparison of prior year’s grant funding is displayed in figure 8.

Figure 8

**Corrections Grant Awards
1996-2008**



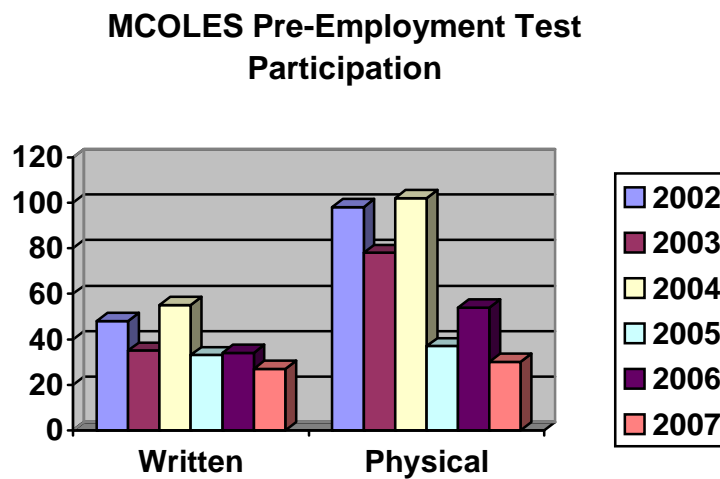
Corrections Grant Awards

<u>Year</u>	<u>Corrections</u>	<u>Corrections Academy</u>	<u>Local Corrections</u>
1996	\$37,469		
1997	35,963		
1998	29,587		
1999	43,366		
2000	42,027		
2001	40,148		
2002	89,021	21,195	
2003			
2004			
2005		36,255	24,095
2006		18,675	
2008			15,005
TOTAL:	\$432,806		

MCOLES PRE-EMPLOYMENT TESTING FUNCTION

The Pre-Employment Testing function of the Institute was changed in 2002. The six event physical fitness exam was replaced with a four event test. The Reading/Writing exam was computerized and is administered separately from the physical fitness portion. The physical fitness exam is conducted at the Physical Education Instructional Facility (PEIF) located on the campus of Northern Michigan University and the Reading/Writing exam is conducted in the Cohodas building computer lab. Figure 9 depicts the attendance since the new testing procedures have come into effect.

Figure 9



MCOLES Pre-Employment Test Participation

<u>Year</u>	<u>Written</u>	<u>Physical</u>
2002	48	98
2003	35	78
2004	55	102
2005	33	37
2006	34	54
2007	30	27